

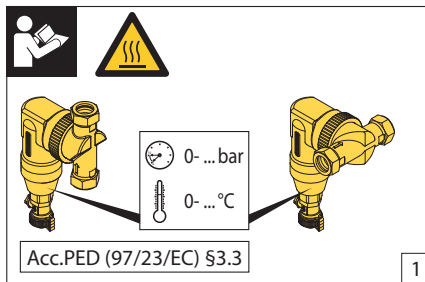
18 63-03

SPIROTRAP Dirt Separator UE (SV3)

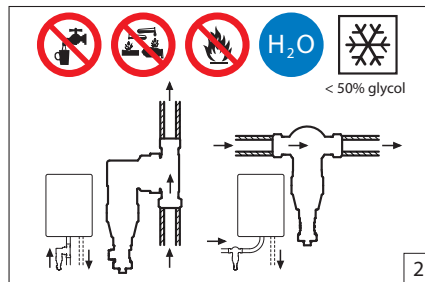


Installation and operating instruction

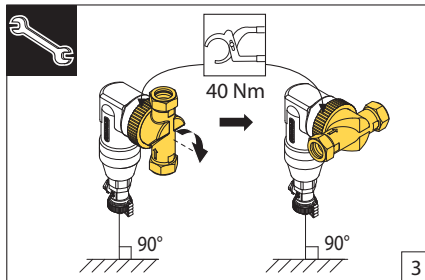
For article no's starting with UE, except for UES



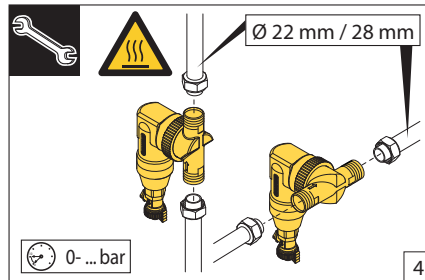
1



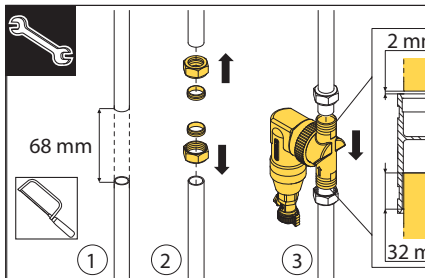
2



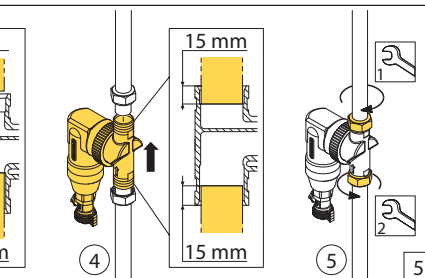
3



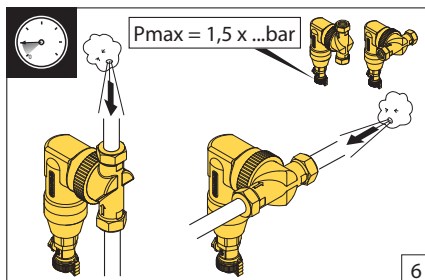
4



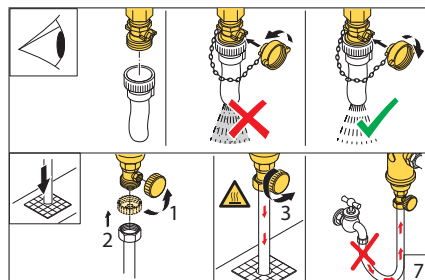
5



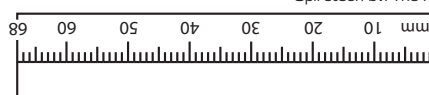
5



6



7



Installation and operating instruction

For article no's starting with UE, except for UES

INSTALLATION AND OPERATING INSTRUCTIONS FOR THE SPIROTRAP MB2 DIRT SEPARATOR UE (SV3)

Instructions

These instructions should be left with the end user and kept for future reference.

Applies to product types SV3 starting with UE Manufacturer: Spirotech B.V. Helmond, The Netherlands

This Spirotech product is designed and manufactured according to the Sound Engineering Practice as stated in the Pressure Equipment Directive [97/23/EC art.3.3] adopted by the European Parliament and the European Council in May 1997

Application

Fully automatic removal of dirt when held in suspension from central heating water, cooling water, water / glycol mixtures (max 50% glycol) and process water.
Not suitable for demineralised water, drinking water, potable water and dangerous or inflammable substances.

General

- The unit comes with 22/28 mm compression fittings.
- The units do not require isolation valves to be fitted.
- They are sealed units and do not need to be dismantled or removed from the system to be cleaned.
- The magnet does not need to be removed or taken from the unit to be cleaned.
- Ensure there is clearance below the unit in order to drain the collected debris.
- We recommend that the MB2 unit is installed as it comes out of the box as a complete unit and not split. This to make sure that the "O" ring is not lost or damaged during installation.

Fig 1: Pressure and temperature range (see figure 1)

From 0 to 6 bar; from 0 to 110 °C, unless clearly indicated otherwise on the product.

Fig 2-3-4-5-6: Installing Position / Flow Direction (see figure 2 to 6)

- Installation and maintenance should only be carried out by a competent person.
- When working on the SpiroTrap always ensure that the installation has cooled down.
- Ensure the SpiroTrap is positioned vertically.

Installing the SpiroTrap

The SpiroTrap should be installed preferably before the components to be protected: i.e. Boiler, Pump etc.

- Drain down the central heating system.
- Fit the SpiroTrap preferably on the boiler return pipe work as near to the boiler as possible.
- The arrow on the unit indicates the direction that the water should flow through the unit.
- Measure and remove the section of pipe (68 mm maximum) where the MB2 will be installed.
- For installation on to rigid pipe work, the connection where the direction arrow is sited has been designed to allow the pipe to enter further into the unit than is normally required this is to allow the unit to slide onto the pipe and then

slide back across to the pipe at the other side of the unit. It is important that the pipe is fully inserted into this last connection and hits the pipe stop.

- Ensure the SpiroTrap is positioned vertically [see drawings].
- Hand tighten the ring nut, and then tighten with gland nut pliers or similar, to achieve the final seal. $\geq 40Nm$ recommended.
- Fit the supplied drain valve to the bottom of the SpiroTrap: ensure PTFE tape or a suitable sealing paste is applied to the thread on the drain valve: shut off the valve using the safety cap as the valve key, then screw the safety cap back on to the drain valve.
- The drain valve can be used to drain the system.
- Make sure that the drain valve is always accessible.
- Drain the SpiroTrap regularly, once a year is recommended.
- Important never use the drain valve as a filling valve.

Fig 7: Draining off the SpiroTrap (see figure 7)

Using best practice, take care when touching the unit as it is a brass product and may become hot to touch and when draining the unit hot water or steam may escape: mount a hose resistant to the pressure and temperature concerned to discharge the water to a suitable drain or container.

- Unscrew and remove the safety cap from the drain valve.
- Mount a discharge hose onto the drain valve, taking care that the hose can not slip off. The safety cap is then used as the key to open the drain valve put the cap onto the valve spindle.
- To empty the collected debris slowly turn the safety cap to open the drain valve $\frac{1}{4}$ of a turn for 5-10 seconds or until the water becomes clear then close the valve.
- Release the collected debris from the unit to a suitable drain or use a suitable container to catch the debris.
- Screw the cap back on to the valve and normally no more cleaning is required until the next annual service. If required this sample of the system water will allow a chemical inhibitor test to be carried out.
- Finally, check the installation pressure after the draining and fill up if necessary.

Guarantee

Spirotech guarantees its products for the life time of the boiler, with a maximum of 20 years from the date of purchase. Incorrect use or installation and any attempt to carry out repairs to Spirotech products make any claim on the guarantee invalid. Damage resulting from failures is not included in the guarantee.

For further information on Spirotech products please contact Spirotech:

Spirotech bv Phone: +31 (0)492 57 89 89
www.spirotech.com
Spirotech UK Ltd phone.: +44 (0)208-451-3344
www.spirotech.co.uk
Spirotech bv Deutschland phone: +49 211 38 42 80
www.spirotech.de

